



photo by @invinciblesmiles of @yogi\_dentist

**The Visible Difference®**



## Double **Your Viewable Field**



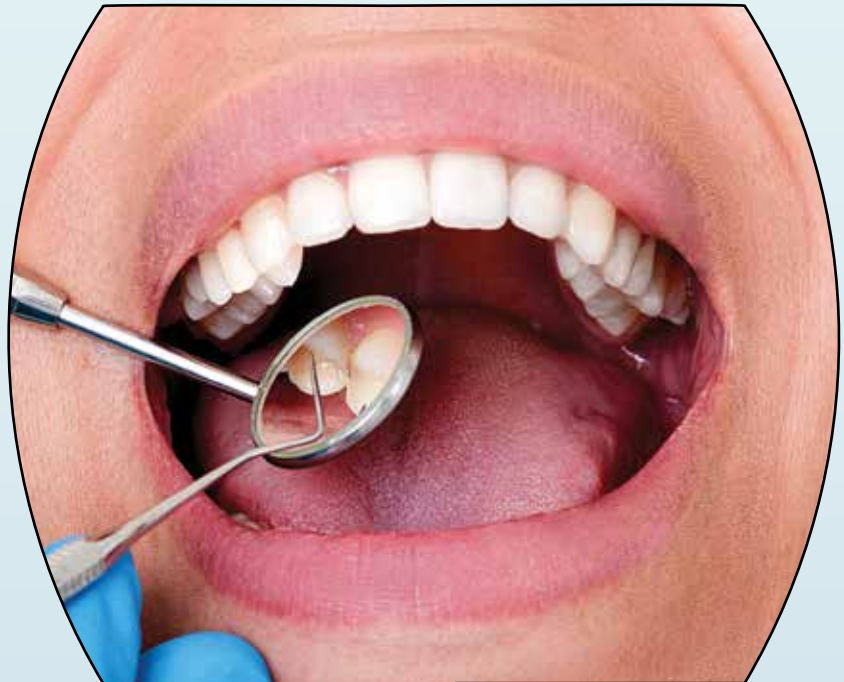
Actual Size

Expanded Field Loupes

Panoramic Loupes



3.5x



4.5x



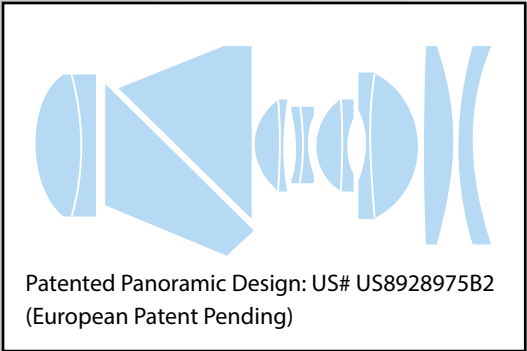


# Panoramic Loupes

The first advancement in telescopic optics in 100 years



See the bigger picture with the new patented panoramic field design, doubling the viewable area over prismatic expanded field optics. Designs for Vision's new panoramic loupes provide precision magnification with an unprecedented field of view.



Loupes	3.5x Expanded Field	3.5x Panoramic Field	4.5x Expanded Field	4.5x Panoramic Field	6.0x Expanded Field	NEW 6.0x Panoramic Field
Viewable Area	50 cm <sup>2</sup>	100 cm <sup>2</sup>	24 cm <sup>2</sup>	65 cm <sup>2</sup>	12.5 cm <sup>2</sup>	21 cm <sup>2</sup>
Field Diameter	8 cm	11.1 x 9 cm	5.5 cm	9 x 7 cm	4 cm	6 x 3.5 cm
Angle of View	14°	20°	9°	16°	6.5°	9°



**Panoramic Loupes** DOUBLE the Viewable Area over **Prismatic Expanded Field** optics, and more than QUADRUPLES the viewable area over **Galilean Standard Field** optics

## Classic **Surgi-Spec®** Loupes



Loupes	<b>2.5x</b>
Viewable Area	50 cm <sup>2</sup>
Field Diameter	8 cm
Angle of View	14°



Loupes	<b>3.0x</b>
Viewable Area	38 cm <sup>2</sup>
Field Diameter	7 cm
Angle of View	11°



Loupes	<b>3.5x</b>
Viewable Area	20 cm <sup>2</sup>
Field Diameter	5 cm
Angle of View	8°



## Expanded Field **High-Vision** Loupes



Loupes	<b>3.5x-EF</b>
Viewable Area	50 cm <sup>2</sup>
Field Diameter	8 cm
Angle of View	14°



Loupes	<b>4.5x-EF</b>
Viewable Area	24 cm <sup>2</sup>
Field Diameter	5.5 cm
Angle of View	9°



Loupes	<b>6.0x-EF</b>
Viewable Area	12.5 cm <sup>2</sup>
Field Diameter	4 cm
Angle of View	6.5°



photo courtesy of @abhaydalal

# Lightweight **Micro-EF Scopes**

## Prismatic Expanded Field Loupes

**NEW 3.0EF**

**50% Smaller  
and  
40% Lighter**

**44% Smaller  
and  
44% Lighter**

Loupes	<b>Micro3.0EF</b>
Viewable Area	78 cm <sup>2</sup>
Field Diameter	10 cm
Angle of View	16°

Loupes	<b>Micro3.5EF</b>
Viewable Area	44 cm <sup>2</sup>
Field Diameter	7.5 cm
Angle of View	12°

Loupes	<b>Micro4.5EF</b>
Viewable Area	20 cm <sup>2</sup>
Field Diameter	5 cm
Angle of View	8°



**Compare  
Magnifications**



Micro3.5EF shown here  
and Micro 4.5EF



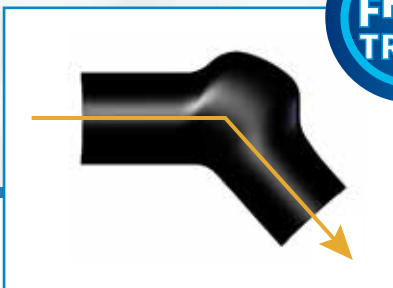
NEW



# Infinity VUE™

↑ Vision Up Ergonomics

Introducing a straight-forward approach to ergonomics. Infinity VUE™ Loupes keep your chin up, your neck straight and your eyes looking forward while viewing the magnified oral cavity.



- New Vision Up Ergonomics
- Available in 3.0x, 3.5x and 4.5x magnification
- Custom Built to your unique measurements
- Precision Coated Optics
- 45 Day Free Trial

NEW 4.5x Infinity VUE™ Loupes



Infinity VUE™ 3.0x shown with  
LED DayLite® WireLess Mini HDi



Infinity VUE™ 3.5x shown with  
LED DayLite® Micro HDi



Document – Broadcast – Record with

# LED NanoCam

DayLite®

**DOCUMENT** Easy to use, bluetooth enabled wireless footpedal for hands-free operation. Digitally insert HiDef video and images into patient record.

**BROADCAST** Transmit real time first person view.

**RECORD** Record dentist's point of view. Easy to use DBR software with HIPAA compliance and 24/7 support.



## LED NanoCam DayLite® 4K

Lightweight 24g  
4K, 1080P resolution  
13 megapixels  
Two Magifications:  
16mm 2.0x and 25mm 3.0x  
Superior Low-Light Performance

## LED NanoCam DayLite® GO

Lightest weight 16g  
1080P, 720P resolution  
3.4 megapixels  
Two Magifications:  
16mm 2.0x and 25mm 3.0x  
Android Compatible for mobile  
or rapid sharing applications



Learn More

*New camera sensor reduces auto exposure and blooming  
in bright light, providing excellent recording/photo ability*

## Award Winning **HDi** High Definition Imaging



without HDi



with HDi

- Advanced photonic design
- Uniform light distribution
- 45% more light
- WireLess and Corded Options



WireLess Mini HDi



Micro HDi



**LED DayLite<sup>®</sup> HDi Headlights**  
[DesignsForVision.com/DentHtml/D-LED/D-Lights.htm](https://DesignsForVision.com/DentHtml/D-LED/D-Lights.htm)



Learn More



**Designs for Vision, Inc.**

4000 Veterans Memorial Hwy. • Bohemia, NY 11716-1024 • 1.631.585.3300

1.800.345.4009 • [info@dvimail.com](mailto:info@dvimail.com) • [DesignsForVision.com](https://DesignsForVision.com)

[f](#) [i](#) [t](#) [i](#) @Designs4Vision